



# vFoglight™ 5.2.4.5

Cartridge for Guest Process Investigation  
Reference Guide



## © 2009 Quest Software, Inc. ALL RIGHTS RESERVED.

This guide contains proprietary information protected by copyright. The software described in this guide is furnished under a software license or nondisclosure agreement. This software may be used or copied only in accordance with the terms of the applicable agreement. No part of this guide may be reproduced or transmitted in any form or by any means, electronic or mechanical, including photocopying and recording for any purpose other than the purchaser's personal use without the written permission of Quest Software, Inc.

If you have any questions regarding your potential use of this material, contact:

Quest Software World Headquarters

LEGAL Dept

5 Polaris Way

Aliso Viejo, CA 92656

[www.quest.com](http://www.quest.com)

email: [legal@quest.com](mailto:legal@quest.com)

Refer to our Web site for regional and international office information.

## Trademarks

Quest, Quest Software, the Quest Software logo, Aelita, Akonix, Akonix L7 Enterprise, Akonix L7 Enforcer, AppAssure, Benchmark Factory, Big Brother, DataFactory, DeployDirector, ERDisk, Foglight, Funnel Web, I/Watch, Imceda, InLook, IntelliProfile, InTrust, Invertus, IT Dad, I/Watch, JClass, Jint, JProbe, LeccoTech, LiteSpeed, LiveReorg, MessageStats, NBSpool, NetBase, Npulse, NetPro, PassGo, PerformaSure, Quest Central, SharePlex, Sitraka, SmartAlarm, Spotlight, SQL LiteSpeed, SQL Navigator, SQL Watch, SQLab, Stat, StealthCollect, Tag and Follow, Toad, T.O.A.D., Toad World, vANALYZER, vAUTOMATOR, vCONTROL, vCONVERTER, vEssentials, vFOGLIGHT, vOPTIMIZER, vRANTER PRO, vReplicator, Vintela, Virtual DBA, VizionCore, Xaffire, and XRT are trademarks and registered trademarks of Quest Software, Inc in the United States of America and other countries. Other trademarks and registered trademarks used in this guide are property of their respective owners.

## Disclaimer

The information in this document is provided in connection with Quest products. No license, express or implied, by estoppel or otherwise, to any intellectual property right is granted by this document or in connection with the sale of Quest products. EXCEPT AS SET FORTH IN QUEST'S TERMS AND CONDITIONS AS SPECIFIED IN THE LICENSE AGREEMENT FOR THIS PRODUCT, QUEST ASSUMES NO LIABILITY WHATSOEVER AND DISCLAIMS ANY EXPRESS, IMPLIED OR STATUTORY WARRANTY RELATING TO ITS PRODUCTS INCLUDING, BUT NOT LIMITED TO, THE IMPLIED WARRANTY OF MERCHANTABILITY, FITNESS FOR A PARTICULAR PURPOSE, OR NON-INFRINGEMENT. IN NO EVENT SHALL QUEST BE LIABLE FOR ANY DIRECT, INDIRECT, CONSEQUENTIAL, PUNITIVE, SPECIAL OR INCIDENTAL DAMAGES (INCLUDING, WITHOUT LIMITATION, DAMAGES FOR LOSS OF PROFITS, BUSINESS INTERRUPTION OR LOSS OF INFORMATION) ARISING OUT OF THE USE OR INABILITY TO USE THIS DOCUMENT, EVEN IF QUEST HAS BEEN ADVISED OF THE POSSIBILITY OF SUCH DAMAGES. Quest makes no representations or warranties with respect to the accuracy or completeness of the contents of this document and reserves the right to make changes to specifications and product descriptions at any time without notice. Quest does not make any commitment to update the information contained in this document.

## License Credits and Third Party Information

To view license credit information, click the License Credits link on the Welcome to vFoglight online help page.

**Reference Guide**  
**March 2009**  
**Version 5.2.4.5**

# Table of Contents

<b>Views</b> .....	<b>5</b>
Overview of Views .....	6
vFoglight GUI Panels .....	6
vmExplorer Dashboard .....	7
Processes View .....	7
Purpose .....	7
Content and Embedded Views .....	8
<b>Index</b> .....	<b>13</b>



# Views

<Replace this note with an introduction to the chapter and its contents.>

This chapter section contains the following sections topics:

<a href="#">Overview of Views</a> .....	6
<a href="#">vFoglight GUI Panels</a> .....	6
<a href="#">vmExplorer Dashboard</a> .....	7
<a href="#">Processes View</a> .....	7

## Overview of Views

vFoglight displays monitoring data in views that group, format, and display data. Dashboards are top-level views that do not receive data from other views. Dashboards usually contain a number of lower-level views. The dashboards supplied with vFoglight, as well as those created by users, are available in the navigation panel. Lower-level views in vFoglight can be added to dashboards or can be accessed by drilling down from a dashboard. They receive and display data directly from the vFoglight Management Server or from other views. Some views filter or select data that appears in other views in the same dashboard. Some are tree views with expandable nodes for selecting servers, applications, or data.

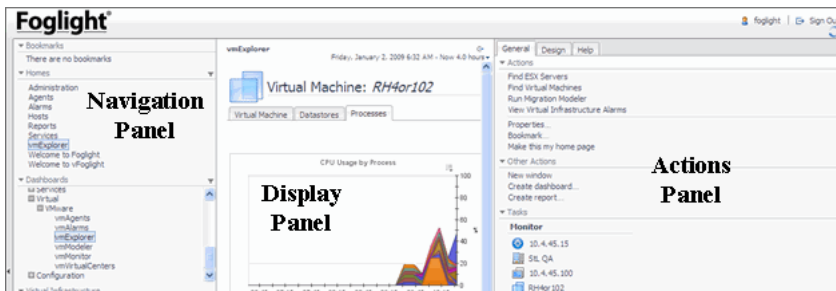
The *vFoglight Cartridge for Guest Process Investigation User Guide* provides detailed procedures on using and configuring this cartridge.

## vFoglight GUI Panels

Depending on where you log in as when you log in to vFoglight, you may see either the contents of the first bookmark (the Welcome page is the default) listed under Bookmarks, or a home page. For further details, refer to the *vFoglight User Guide*.

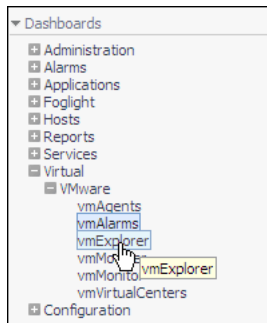
Typically, the GUI is divided into the following three panels:

- The navigation panel on the left.
- The larger display panel in the middle.
- The actions panel on the right.



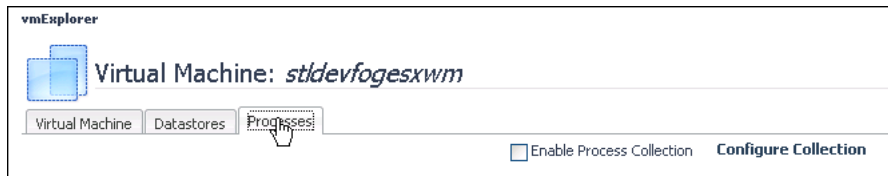
# vmExplorer Dashboard

Cartridge for Guest Process Investigation processes information is viewed from the vmExplorer dashboard. The vmExplorer dashboard is located in the navigation panel of vFoglight, below Dashboards (**Dashboards >Virtual> VMWare>vmExplorer**).



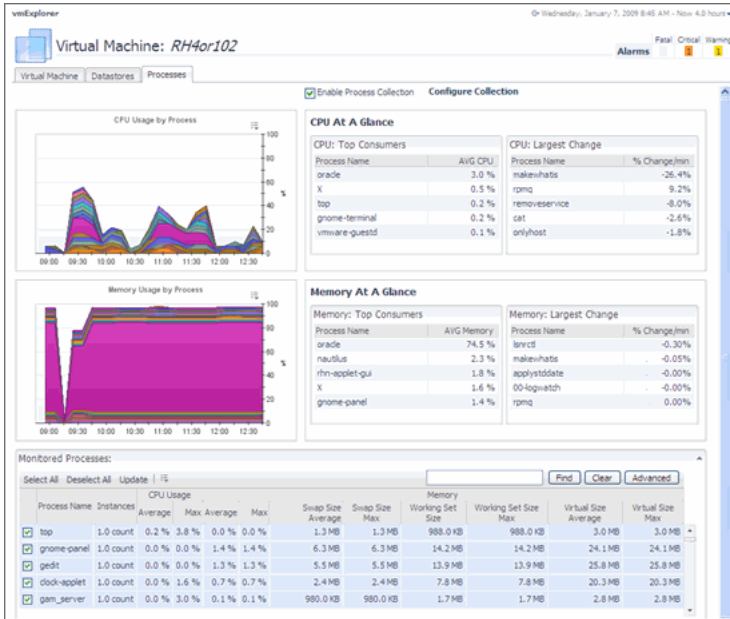
## Processes View

To access the process information generated by the Cartridge for Guest Process Investigation, click the **Processes** tab.



## Purpose

The Processes dashboard provides an organized view of process information gathered by the Cartridge for Guest Process Investigation from the virtual or physical machine configured to send process information. When you select the Processes tab, all process information for that machine displays, allowing you to view CPU, memory, and monitored processes.



## Content and Embedded Views

The content of the Processes dashboard contains the following standard embedded views:

- [Understanding %CPU Values in vFoglight](#)
- [Memory Usage by Process View](#)
- [Memory Usage by Process View](#)
- [Memory At A Glance View](#)
- [Memory At A Glance View](#)
- [Monitored Processes](#)

## Understanding %CPU Values in vFoglight

Unlike other data whose values represent a single point in time (when the data is collected), each %CPU data value gathered by the Cartridge for Guest Process Investigation is the average CPU utilization over time between successful data collections. For example, if the configured sample interval is 30 seconds, a process's %CPU utilization is an average of its utilization over the 30 second time period,



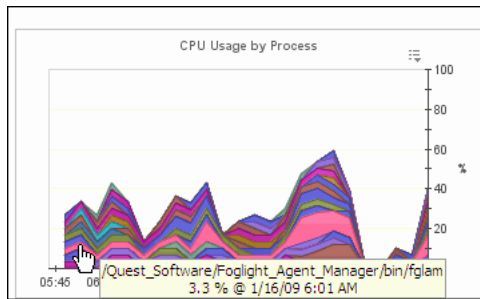
assuming two back-to-back collects were successful. For this reason, decreasing the sample interval results in values that are more "real-time", making individual peaks and valleys become more apparent, while increasing the sample interval does the opposite.

## CPU Usage by Process View

This view shows the percentage of CPU usage over a period of time.

### Purpose and Content

This view displays the cumulative CPU usage by process over time in percentage. It shows the total process load on the CPU being monitored.

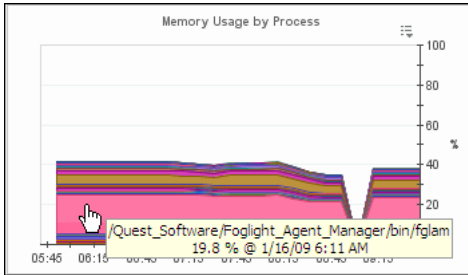


## Memory Usage by Process View

This view shows the percentage of memory usage by a process over a period of time.

### Purpose and Content

This view shows the load on memory for processes on a given virtual machine. Mousing over the processes displays a popup of the services.



## CPU At A Glance View

CPU At A Glance provides a snapshot of CPU usage for the machine being monitored.

### Purpose and Content

This view displays how the CPU is being used based on the following:

- The top five processes using the most CPU. These five processes are the “top consumers” for that CPU.
- The top five processes that have had the largest recent change in CPU usage.

CPU: Top Consumers		CPU: Largest Change	
Process Name	AVG CPU	Process Name	% Change/min
oracle	3.8 %	top	-0.00%
X	0.6 %	tnslsnr	0.00%
top	0.3 %	X	0.00%
gnome-terminal	0.3 %	syslogd	0.00%
vmware-guestd	0.1 %	gnome-terminal	-0.00%

## Memory At A Glance View

**Note** It is possible for multi-instance processes to display %Memory values that are over 100%. This occurs because the PS Command used to query the system returns %Memory values that include the memory used by shared libraries. Since the %Memory values for all individual processes are summed to generate the value, the memory used by shared libraries may be included multiple times.

This view provides a snapshot of memory usage for the machine being monitored.

## Purpose and Content

This view shows the user how the memory is being used based on the following:

- The top five processes using the most memory. These five processes are the “top consumers” for that memory.
- The top five processes that have had the largest recent change in memory usage.

Memory: Top Consumers		Memory: Largest Change	
Process Name	AVG Memory	Process Name	% Change/min
oracle	74.5 %	grep	↕%
nautilus	2.3 %	sshd	— -0.00%
rhn-applet-gui	1.8 %	oracle	— -0.00%
X	1.6 %	khudb	— 0.00%
gnome-panel	1.4 %	top	— 0.00%

## Monitored Processes

This view displays a table of all processes running on a host being monitored.

### Purpose and Content

The list is sortable, filterable, and allows you to view all the monitored processes on a host. It provides a snapshot of CPU Usage and memory for each process. You can limit the processes you wish to view by unchecking them or do a text search for a particular process you want to view.

Monitored Processes:											
Select All Deselect All Update   🔍											
Process Name	Instances	CPU Usage				Memory					
		Average	Max	Average	Max	Swap Size Average	Swap Size Max	Working Set Size	Working Set Size Max	Virtual Size Average	Virtual Size Max
<input checked="" type="checkbox"/> khudb	1.0 count	0.0 %	0.0 %	0.0 %	0.0 %	0.0 KB	0.0 KB	0.0 KB	0.0 KB	0.0 KB	0.0 KB
<input checked="" type="checkbox"/> top	1.0 count	0.3 %	25.0 %	0.0 %	0.0 %	1.3 MB	1.3 MB	988.0 KB	988.0 KB	3.0 MB	3.0 MB
<input checked="" type="checkbox"/> gnome-panel	1.0 count	0.0 %	0.0 %	1.4 %	1.4 %	6.3 MB	6.3 MB	14.2 MB	14.2 MB	24.1 MB	24.1 MB
<input checked="" type="checkbox"/> gedit	1.0 count	0.0 %	0.0 %	1.3 %	1.3 %	5.5 MB	5.5 MB	13.9 MB	13.9 MB	25.8 MB	25.8 MB
<input checked="" type="checkbox"/> clock-applet	1.0 count	0.0 %	0.0 %	0.7 %	0.7 %	2.4 MB	2.4 MB	7.8 MB	7.8 MB	20.3 MB	20.3 MB



# Index

## G

### Guest Process

%CPU Values in vFoglight 8

## P

### Processes View

CPU At A Glance View 9

CPU Usage by Process View 8

Memory At A Glance View 10

Memory Usage by Process View 9

Monitored Processes 11

Purpose 7

## V

vFoglight GUI Panels 6

vmExplorer Dashboard 7